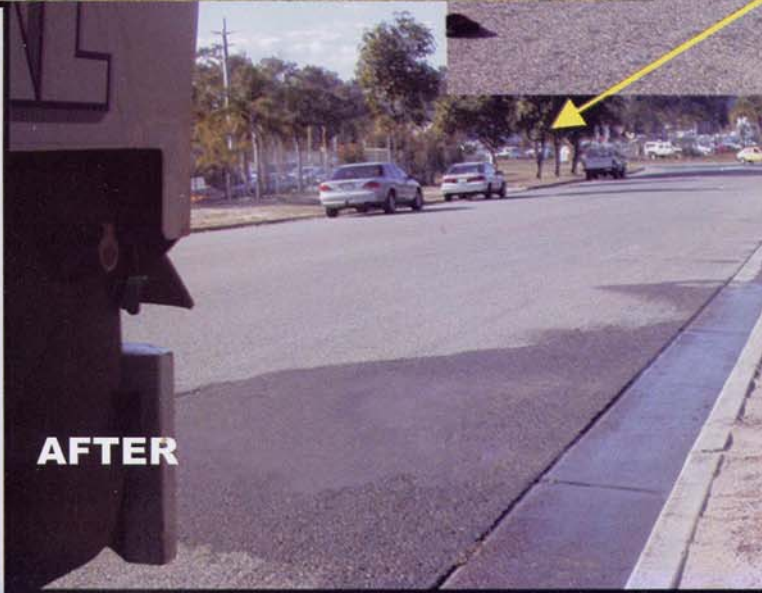




SCHWARZE

Sweeping Changes in Australia



A6500XL

'Environmentally Friendly'

**REGENERATIVE
AIR SWEEPER**

Will sweep cities up to 50,000 people with one sweeper

SCHWARZE A6500XL

SPECIFICATIONS

DIMENSIONS

Wheelbase.....	3630mm
Overall Sweeping Width.....	2032mm
With One Broom.....	2700mm
With Dual Brooms.....	3300mm
Turning Circle Radius.....	6050mm
Overall Length.....	6295mm
Overall Height.....	2740mm
Overall Width.....	2400mm

AUXILIARY ENGINE

Model.....	706 LTE
Induction system.....	Turbo
Manufacturer.....	VM
Combustion System.....	Direct Injection Diesel
Number of cylinders.....	6
Displacement.....	254 cu.in (4.2L)
Bore.....	94mm
Stroke.....	100mm
Power Rating.....	93 kW @ 3000 RPM
Cooling System.....	Liquid Cooled
Electrical.....	12 Volts
Oil Filter.....	Full Flow / Spin-on
Air Cleaner.....	Dry Type / HD
Safety Shutdown.....	Automatic

ELECTRICAL SYSTEM

Starter.....	12 Volts 4.5 kW
Alternator.....	12 Volt, 60 Amp
Battery.....	2 X 12 Volts, 520 CCA Each
Controls.....	12 Volts
Circuit Breakers.....	Resettable Type

CAB CHASSIS

Manufacturer.....	Isuzu
Model.....	FRR 500
GVM.....	11,000 kg
Cab Type.....	Cab Over Engine
Engine Access.....	45° Full Tilt
Electrical System.....	24 Volts

BRAKES

Service.....	Air Over Hydraulic
Parking.....	Air Operated

PROPULSION ENGINE

Manufacturer.....	Isuzu
Model.....	SITEC 190
Number of cylinders.....	6
Displacement.....	7,790cc
Bore x Stroke.....	115mm X 125mm
Power.....	141kW @ 2400 RPM
Torque.....	582Nm @ 1500 RPM
Combustion System.....	Direct Injection Diesel
Oil Filter.....	Full Flow / Spin-on
Air Cleaner.....	Dry Type / HD

TRANSMISSION

Type.....	Allison 545, 4 Speed Automatic
-----------	--------------------------------

STEERING

Type.....	Integral Power
Ratio.....	17.4:1

DEBRIS HOPPER

Capacity.....	7 Cubic Metres
Construction.....	Heavy Gauge Stainless Steel
Dumping.....	Electro / Hydraulic
Inspection Doors.....	One Each Side of Hopper
Dumping Controls.....	In Cab
Dumping Height.....	1100mm
Dumping Tilt Angle.....	55°
Interior Finish.....	Natural Stainless Steel
Exterior Finish.....	Powder Coat Enamel

SUCTION FAN

Type.....	WhisperWheel™ Centrifugal Fan
Drive.....	5 SPB Section V Belts
Nom. Speed.....	2600 RPM
Number of Blades.....	12
Diameter.....	832mm
Mounting.....	2 Sealed Bearing Units
Construction.....	Welded Bissalloy Steel Blades

SUCTION FAN CASING

Construction.....	Welded Mild Steel
Liner.....	Replaceable Rubber
Vacuum Enhancer.....	for Light / Heavy Material

HYDRAULIC SYSTEM

Type.....	Vane Pump
Fluid Capacity.....	80 Litres
Drive.....	Direct Drive
Filter.....	10 micron Spin-on
Strainer.....	80 Mesh

SWEEPING HEAD

Type.....	Dual Chamber Full Width Blast Orifice
Operating Direction.....	Forward
Suspension.....	Adjustable Spring Balance
Full Width.....	2032mm
Suction Hose Diameter.....	355mm
Blast Hose Diameter.....	355mm
Hose Construction.....	Reinforced Moulded Rubber
Skids.....	Mild Steel with Tungsten Carbide Inserts
Controls.....	Hydraulic Raise & Lower

DUST CONTROL

Type.....	High Pressure / Low Volume
Water.....	1000 Litres
Tank Construction.....	Stainless Steel
Fill Diameter.....	100mm
Controls.....	Electric In-Cab

GUTTER BROOM

Type.....	4 Segment Steel Tined
Diameter.....	1000mm
Drive.....	Hydraulic Motor
Speed.....	Variable Non-Reversing
Tilt Adjustment.....	Electric In-Cab

TYRES & WHEELS

Type.....	Tubeless Steel Belted Radials
Size Front.....	9.5R17.5 Single-2725 kg Max Load
Size Rear.....	9.5R17.5 Double-5150 kg Max Load
Wheels.....	Split Ring Construction

STANDARD EQUIPMENT

- ★ Integrated Air Conditioning
- ★ AM/FM Radio Cassette Player
- ★ Air Suspension on Seat Left Hand Side
- ★ Electrically Adjustable West Coast Mirrors
- ★ Fire Extinguisher in Cabin
- ★ Tinted Windows
- ★ Spare Wheel & Tyre Supplied
- ★ Hour Meters to Both Engines
- ★ Murphy Auxiliary Engine Safety Shutdown
- ★ Work Lights to each side, rear and Aux Engine Bay
- ★ Two Lockable Tool Boxes
- ★ Dual Control & Dual Sweep
- ★ Additional High Mounted Stop & Indicator Lights
- ★ Towing Eyes, Front & Rear
- ★ Seat Covers
- ★ Floor Mats
- ★ Hopper Screen Vibrator

OPTIONAL EQUIPMENT

- ★ Herbicide Weed Control Spray
- ★ High Pressure Front Spray Bar
- ★ High Pressure Water Lance
- ★ Rear Mounted Spring Assisted Pit Hose
- ★ Rear Mounted Hydraulic Assisted Pit Hose
- ★ Roof Mounted Spring Assisted Pit Hose
- ★ Roof Mounted Hydraulic Assisted Pit Hose
- ★ CCTV with Additional Camera to Right Hand Gutter Broom
- ★ Directional Arrow Bar
- ★ GEO Brooms
- ★ Windshield Sun Visor
- ★ Drivers Window Weather Shield
- ★ Heated Side Mirrors
- ★ External Tipping Controls
- ★ Spare Tyre Carrier
- ★ Large Roof Mounted Arrow Bar

Manufacturer reserves the right to change specifications without



31 Antimony Street, Carole Park, Queensland 4300
Telephone: (07) 3271 9777, Facsimile: (07) 3271 62 86
Email: support@schwarze.com.au Web: www.schwarze.com.au